



Direct Dial/Ext: 01622 694367
Fax:
e-mail: Karen.manning@kent.gov.uk
Ask for: Karen Manning
Your Ref:
Our Ref:
Date: 1 November 2010

Dear Member

**ENVIRONMENT, HIGHWAYS AND WASTE POLICY OVERVIEW AND SCRUTINY COMMITTEE
- THURSDAY, 4 NOVEMBER 2010**

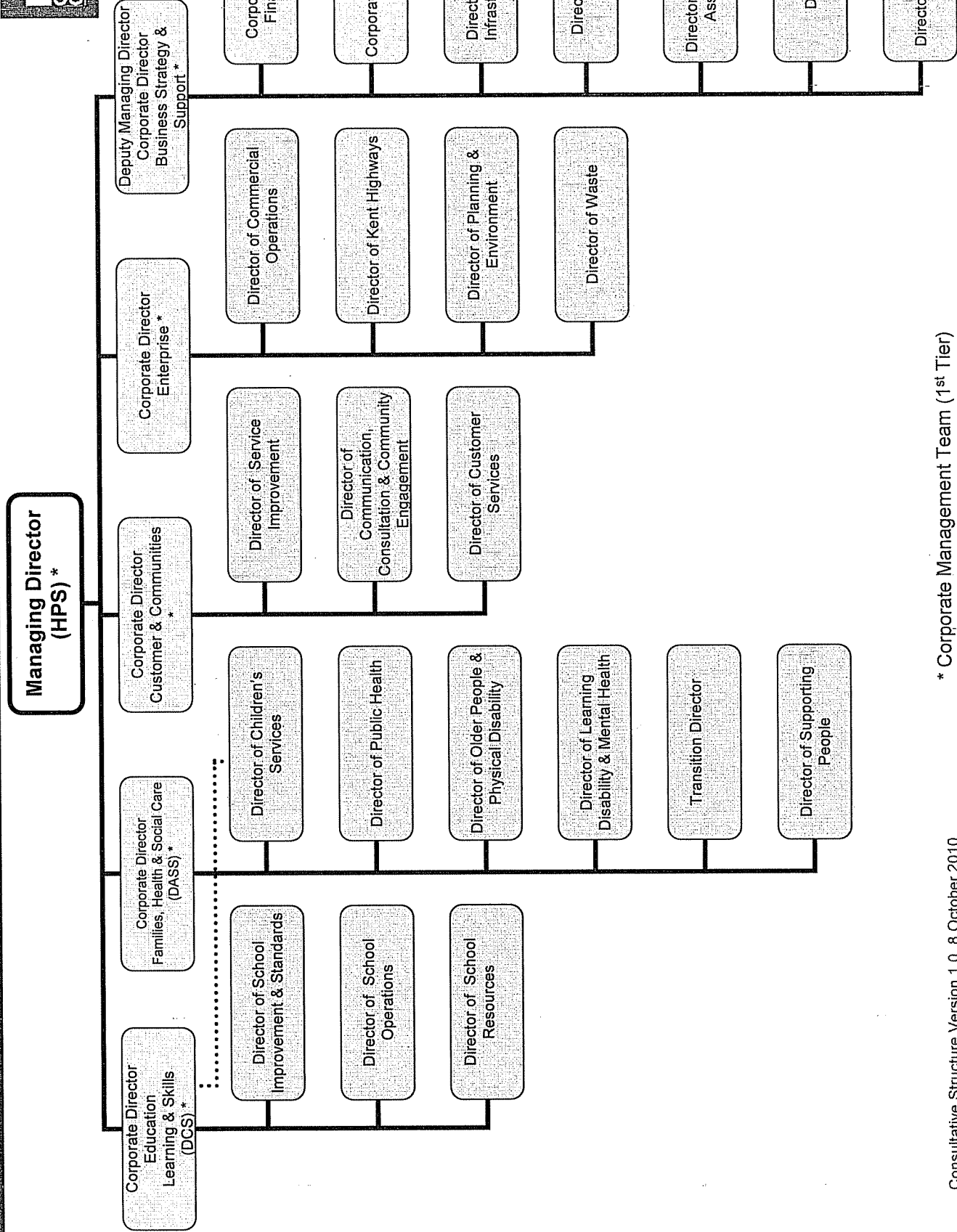
Please find enclosed, for consideration at the meeting of the Environment, Highways and Waste POSC taking place on Thursday, 4 November 2010 the following supplementary paper which contains the original charts as presented to Cabinet at its meeting on 11 October. Please add these original charts to those contained in the report which was circulated with the main agenda for this meeting.

Agenda No	Item
B6	<u>Change to Keep Succeeding</u> (Pages 1 - 6)

Yours sincerely

Peter Sass
Head of Democratic Services & Local Leadership

This page is intentionally left blank



* Corporate Management Team (1st Tier)

CORPORATE DIRECTOR
Education, Learning & Skills
(DCS)

Director of School Improvement & Standards	Director of School Operations	Director of School Resources	Dotted line relationship to Director of Children's Services
<p>Early years and Childcare Standards and School Improvement</p> <ul style="list-style-type: none"> * Primary School Improvement * Secondary school improvement * Special school improvement <p>Standards and School Improvement</p> <p>14-19 Entitlement</p> <p>Careers guidance</p> <p>Connexions</p>	<p>Association of Schools Governor Services</p> <p>Information and support for parents</p> <p>Financial Awards</p> <p>Admissions & Transport commissioning</p> <p>Attendance and Behaviour</p> <p>Assessment of Learners with Additional Needs</p> <p>Planning & Provision</p> <p>Children and YP disability (including SEN, health assessment and transition planning)</p> <p>Educational Psychology</p> <p>Specialist services</p>	<p>Education finance, Schools personnel service</p> <p>Development of a schools company/vehicle to include: Property</p> <p>Personnel</p> <p>Traded services</p> <p>Continuous professional development</p> <p>School improvement service</p>	<p>This means that connections are maintained to the team around the child and the team around the school</p> <p>Links with the 12 district teams, locality boards and the Children's Trust</p>

Please note: The headings listed below the 1st and 2nd tier Director posts are intended to be indicative of the functions contained within that division and directorate.

CORPORATE DIRECTOR
Families, Health & Social Care
(DASS)

Director of Supporting People	Director of Children's Services (dotted line to DCS)	Director of Older People & Physical Disability	Director of Learning Disability & Mental Health	Transition Director	Director of Public Health
<p>Youth Offending service (dotted line to youth service & link to attendance & behaviour service) Child Health Commissioning of Specialist care Quality assurance of health and social care Safeguarding Adults and Children Supporting People KDAAT</p>	<p>Children's Services West Kent (Initial duty and assessment, child protection and long term care, prevention including children's centres) Children's Services East Kent (ditto) Children's Services Mid Kent (ditto) Corporate Parenting (includes, including adoption and fostering, Unaccompanied Asylum Seeking Children and care leavers) Links with the 12 district teams, locality boards and the Children's Trust (joint commissioning with partners to support vulnerable young people)</p>	<p>HoS Ashford /Shepway HoS Dover /Thanet HoS Canterbury /Swale HoS Maidstone / Malling HoS South West Kent HoS Dartford, Gravesham & Swanley Head of Strategic Commissioning OP / PD Contracts & Procurement Planning & Market Shaping</p>	<p>HoS LD – WK HoS LD – EK Head of Strategic Commissioning LD&MH Contracts & Procurement Planning & Market Shaping MH Partnership arrangement with KPMT VPN Manager</p>	<p>Community Health Trust development team (commissioning & back office) Development team to create social enterprises Relationship to Director of Service Improvement</p>	<p>Public Health Intelligence Commissioning of provision Health promotion Case management of Healthwatch</p>

Please note: The headings listed below the 1st and 2nd tier Director posts are intended to be indicative of the functions contained within that division and directorate.

CORPORATE DIRECTOR
Customer and Communities

Director of Service Improvement Need close links to Director of Business support	Director of Customer Services	Director of Communication, Consultation and Community Engagement
<p>Re-engineering resource Change resource Developing Models for externalising service delivery, e.g outsourcing/mutuals/social enterprises Locality Delivery Team Place based budgeting delivery of offender management proposals Margate Task force Place based budgeting delivery of Margate task force proposals Supporting independence Welfare reform Kent supported employment Building social capital (SILK) Big Society Volunteering</p>	<p>Gateway Delivery Contact Centre Business web development Health watch Libraries & Archives Registrars Arts & Kent Film Office Sport, Leisure & Olympics Extended Schools Youth Service Community learning & Skills Adult Learning Adult Apprenticeships Countryside Access - PROW Country Parks & Kent Downs AONB Emergency Planning Community Safety Trading Standards</p>	<p>Engagement / public involvement Community Liaison Business partners- Directorate communications Internal Communication Employee Engagement Media and Operations Events Digital & Moving Images</p>

Please note: The headings listed below the 1st and 2nd tier Director posts are intended to be indicative of the functions contained within that division and directorate.

CORPORATE DIRECTOR
Enterprise

Director of Waste Management	Director of Kent Highways	Director of Commercial Operations	Director of Planning & Environment
Waste Management	Community Operations Network Management Transport & Development Technical Services Countrywide Improvements	Kent Scientific Services Visit Kent Locate in Kent Produced in Kent Tourism Project management capacity Commercial Services Delivery of regeneration projects and any place based budgeting proposals on regeneration	Development Planning (MWF & LDF's) Planning Applications Environmental Programmes & Partnerships (rural agenda & climate change) Natural Environment & Coast Gypsy & Traveller Unit Heritage Conservation

Please note: The headings listed below the 1st and 2nd tier Director posts are intended to be indicative of the functions contained within that division and directorate.

CORPORATE DIRECTOR
Business Strategy & Support
And Deputy Managing Director

Corporate Director of Finance (Chief Financial Officer - S151)	Director of Business Strategy	Director of Governance and Assurance (Monitoring Officer)	Director of Property and Infrastructure Support	Corporate Director of HR	Director of IT	Director of Procurement
<p>Audit & Risk</p> <p>N.B. direct access to Mo & Hops whenever required.</p> <p>Financial Services</p> <p>Business partners</p> <p>- Directorate</p> <p>Finance</p> <p>Financial Management</p> <p>Strategic Finance</p>	<p>Corporate policy</p> <p>Europe / International</p> <p>Public affairs</p> <p>Public health</p> <p>Economic development</p> <p>Regeneration strategy</p> <p>Strategic planning – spatial & transport.</p> <p>Strategic assets</p> <p>Social policy</p> <p>Education strategy</p> <p>Customer strategy</p> <p>Engagement strategy</p> <p>Performance Management & Monitoring</p> <p>Business</p> <p>Intelligence & service review</p> <p>Partnership support</p> <p>External Funding</p> <p>Cabinet Office</p>	<p>Information resilience and transparency</p> <p>Corporate data protection</p> <p>Democratic Services</p> <p>Legal Services (transition to external arms length trading organisation)</p> <p>Elections</p> <p>Coroners</p>	<p>Capital & infrastructure support</p> <p>Strategic Asset & Enterprise Fund</p> <p>Delivery of Total Place activity</p> <p>BSF, PFI & Academies</p> <p>Directorate PFI & development (KASS)</p> <p>Business partners</p> <p>Directorate – Property</p> <p>Office Transformation</p> <p>Estates management & property operations</p>	<p>HR Business operations (includes graduate scheme)</p> <p>HR Employment Strategy</p> <p>Organisation development (including embedded – learning and workforce development)</p> <p>Business partners</p> <p>Directorate – HR</p> <p>Business support – case work</p> <p>Directorate HR</p> <p>Health and Safety</p>	<p>ICT</p> <p>commissioning</p> <p>ICT operations</p> <p>Kent Connects</p> <p>Business partners -</p> <p>Directorate IT</p>	<p>Procurement team</p>

Please note: The headings listed below the 1st and 2nd tier Director posts are intended to be indicative of the functions contained within that division and directorate.